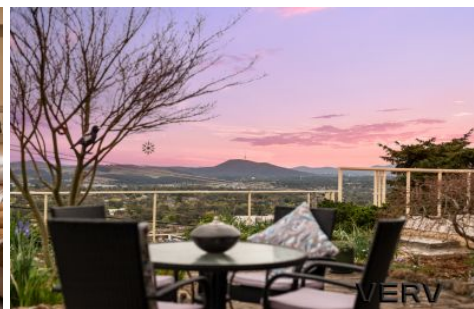


VERV



20 Titheradge Place Chapman ACT

5 🛏 4 🚿 4 🚗

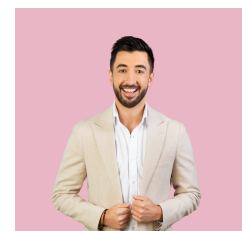
This exquisite residence is set high within Chapman Heights and offers breathtaking 180-degree views across the Molonglo Valley, the Arboretum, Black Mountain Tower, and beyond. Positioned on an elevated block with a perfect northerly aspect, this home takes full advantage of its location, delivering uninterrupted vistas that capture the very best of Canberra's landscape. With easy access to Coleman Ridge walking trails just 100 metres away, this home provides the ultimate lifestyle for those who love nature, stunning scenery, and a peaceful, private setting.

Number 20 is an exceptional, single-story 5-bedroom, 4-bathroom family home that is built under an extraordinary 382m² under the roofline, offering three spacious living areas designed for flexible living arrangements. The

Type : House
Price : Auction
Land Size : 1463 sqm
View : <https://www.vervproperty.com/sale/act/west-on-creek/chapman/residential/house/8144125>



Sharna Sinclair
02 6176 3476



Jason Roses
02 6176 3476

[For full version visit the website](https://www.vervproperty.com)

<https://www.vervproperty.com>

