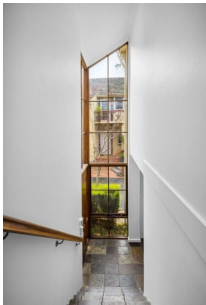


VERV



2/33 Murray Crescent Griffith ACT

4 

Are you searching for the ideal office location that combines historic charm with modern convenience? Look no further! Verv Property presents Unit 2, 33 Murray Crescent - an exceptional 120* sqm office space situated in a stunning heritage building in the heart of Griffith.

Enjoy a bright, welcoming atmosphere with abundant natural light streaming through large windows, creating an inspiring and productive workspace.

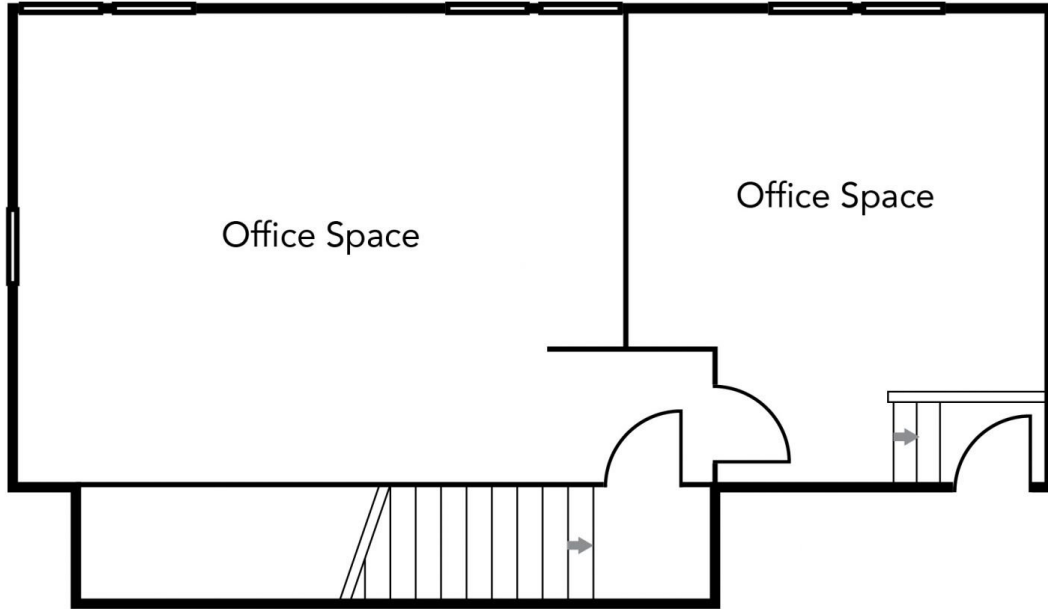
Located in a beautifully maintained heritage building, this office space uniquely blends historic elegance and contemporary functionality.

Situated in Griffith, 33 Murray Crescent is perfectly positioned close to the Manuka shopping precinct, which includes boutiques, restaurants, and cafes. This makes it

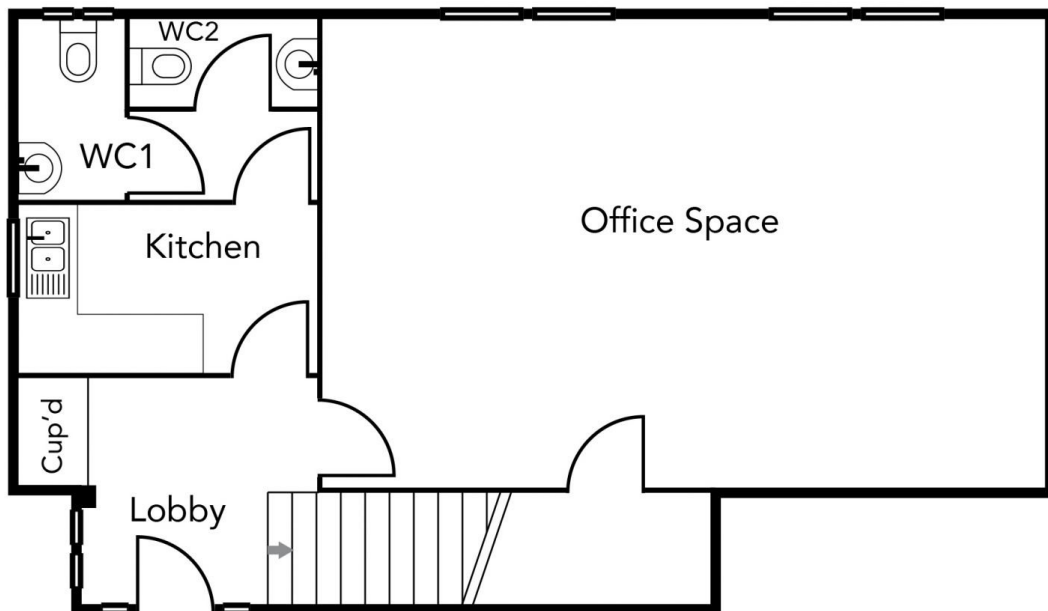
Price : Contact Agent
Building Size : 120 sqm
View : <https://www.vervproperty.com/lease/act/inner-south/griffith/commercial/offices/8032615>



Natalie Shawcross
02 6176 3476



First Floor



Ground Floor