

VERV



42/35 Tay Street Watson ACT

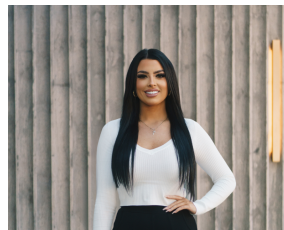
2  1  1 

Welcomed to the market is this gorgeously located inner north unit positioned in one of Canberra's most sought-after suburbs of Watson, opposite the nature reserve. This stunning property has recently been renovated with timber flooring throughout.

Number 42 is a gorgeous architectural designed unit offering two bedrooms and one designer bathroom with ample storage throughout. As you enter the heart of this home you are greeted with a gorgeous open plan living area custom joinery, study desk and additional custom joinery and cabinetry to the living space. The stunning kitchen offers 20mm laminate benchtops, tiled splash back and quality Fisher & Paykel appliances.

The home offers two outdoor entertaining areas including an enclosed leafy front courtyard and generous rear

Building Size : 66 sqm
View : <https://www.vervproperty.com/sale/act/inner-north/watson/residential/unit/801046>
1



Sharna Sinclair
02 6176 3476

